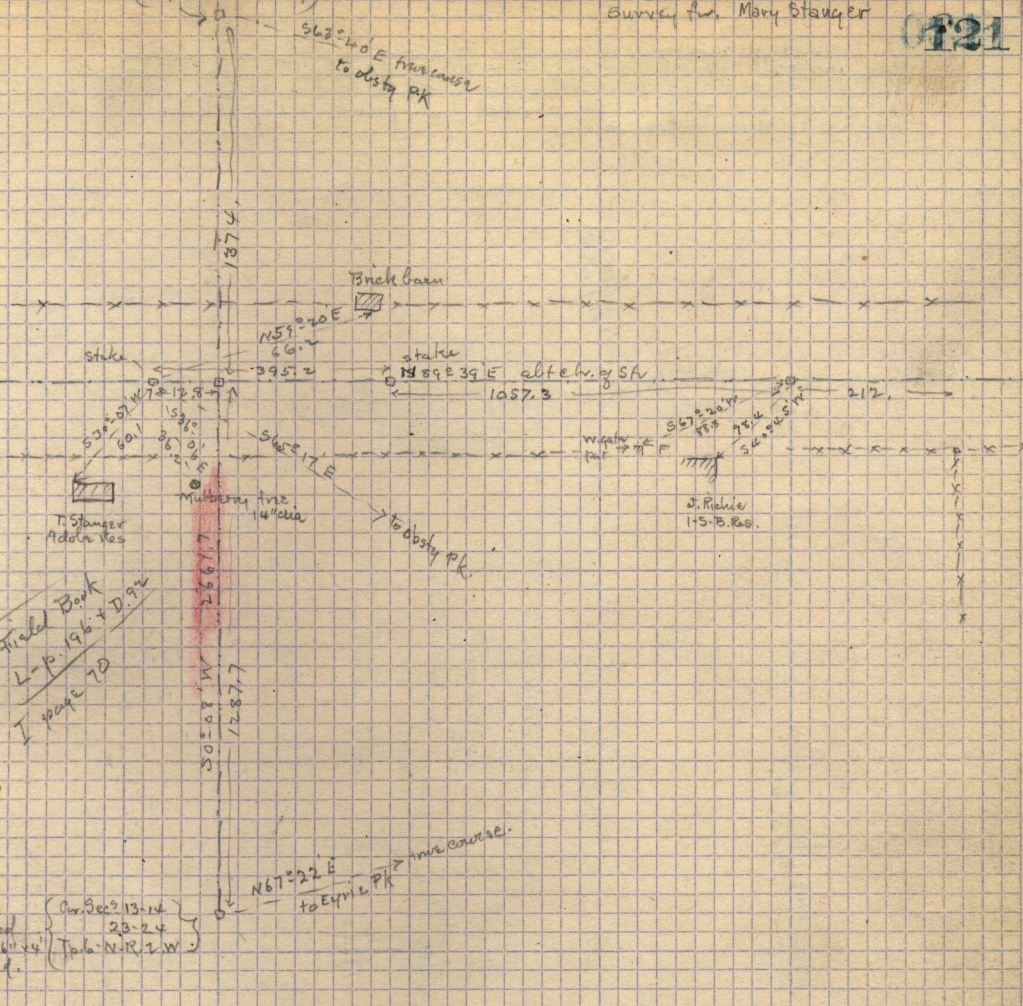


S67°40'E true course  
to obdy PK



See Traded Bank  
 L-p. 196 + D. Row  
 I page 7D

Redwood  
 6' x 12' x 14'  
 3' underground.  
 (see Sec 13-14 23-24  
 Tola. N-R, 2-W)  
 N67°22'E  
 to Eymle PK  
 true course.

